

Multicultural Information eXchange

MIX is a program of the American Red Cross of Northeast Indiana providing free translation, interpretation, referral and tracing services to non-native English speakers in the community and cultural competency workshops to local organizations.

MIX SERVICES

Translation Services

MIX translates a variety of personal documents including birth certificates, licenses, diplomas and ID cards. If clients are in need of medical or legal document translation, MIX will refer you to the appropriate agency.

Interpretation Services

MIX assists clients in-house with applications, phone calls and general appointment scheduling. Information & Referral Services MIX will refer clients who would like more information regarding social services in Allen County to the appropriate agency. Local social services available include educational, legal, immigrational, medical and financial assistance.

Messaging and Tracing Services

MIX will assist clients in contacting relatives separated by war, disaster or conflict around the globe by connecting with the respective country's Red Cross, Red Crystal or Red Crescent Society. Family members displaced by war can be traced through the American Red Cross' Holocaust and War Victims Tracing and Information Center.

Cultural Competency Workshops

MIX provides workshops to educate community organizations and businesses on how to communicate effectively with limited English speakers, as well as how to increase awareness of local cultural groups.

MIX HOURS: Monday - Friday · 8:00am - 5:00pm

ADDRESS: 1212 East California Road · Fort Wayne, IN 46825 ·

PHONE: (260) 484-9336 x242



* Map is not to scale.

Conversions Chart

HEIGHT

1 foot (12 inches) = 30.48 cm

WEIGHT

1 pound = 0.45 kilograms

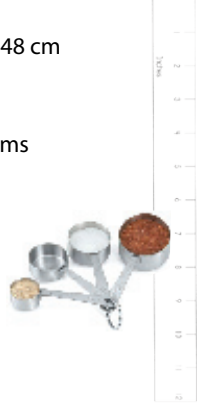
LIQUID CAPACITY

1 gallon = 3.7854 liters

1 teaspoon = 5 mL

1 tablespoon = 15 mL

1 cup = 250 mL



WRITING DATES:

02 / 01 / 2008
Month Day Year

February 01, 2008 pronounced as:
"February first two thousand eight"

01 February 2008

LENGTH & DISTANCE

1 inch = 2.54 cm

1 yard (3 feet) = 0.9144 m

1 mile (1760 yards) = 1.6093 km

MEN'S CLOTHING

Men's dress shirt and pant sizes correspond to the actual size of their dimensions in inches. Men's dress shirt sizes measure the circumference of the neck. If a second number is listed, it is usually the sleeve length, and runs from 32 to 36 inches. Men's pants are sized according to the waist and the inseam measurement. The inseam is the distance from crotch to hem. Men's coats are measured using the chest size, measuring under the arms.

Sizes	USA & Canada	Europe
Small (S)	34	87
Medium (M)	36-38	91-97
Large (L)	40	102
Extra-Large (XL)	42-44	107-112
Extra-Extra Large (XXL)	46-48	117-122

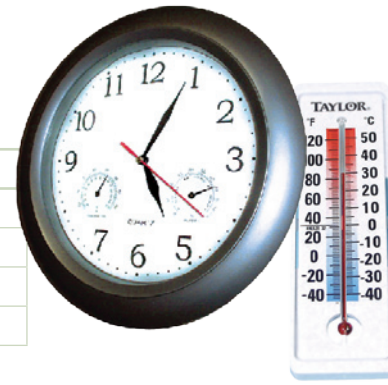
MEN'S SHOES

USA & Canada	Europe	Mexico
5	37	4
6	38	5
7	39	6
8	41	7
9	43	8
10	44	9
11	45	10
12	46	11
13	47	12

MEN'S

TIME

12-hour clock	24-hour clock
12:00pm. = noon	12:00
12:00am. = midnight	0:00 or 24:00
5:00am.	5:00
5:00pm.	17:00



SPEED

Miles per hour	Kilometers per hour
20	32.19
30	48.28
40	64.37
50	80.47
60	96.56
70	112.65

TEMPERATURE

Fahrenheit (F)	Celsius (C)
32	0
40	5
50	10
60	15
70	20
75	25
85	30
105	40

WOMEN'S CLOTHING

Sizes	USA & Canada	Europe
Extra-Small (XS)	0-2	28-30
Small (S)	4-6	32-34
Medium (M)	8-10	36-38
Large (L)	12-14	40-42
Extra-Large (XL)	16	44

WOMEN'S SHOES

USA & Canada	Europe	Mexico
5	35	2
6	36	3
7	37.5	4
8	38.5	5
9	40	6
10	42	7
11	43	8
12	44	9

WOMEN'S

International Guide to Greater

FORT WAYNE